

LOWDOWN™

HIGH SPEED TRAIL CAM VIEWER

LOWDOWN™ is a premium, high-speed trail camera viewer, designed specifically for that purpose. It is three times faster than any other available trail camera viewer and far easier to use because it is not bogged down by internal memory (although you can save images to a second card), or unnecessary tablet functions (so it cannot connect to Wi-Fi, accept apps, etc.) and the proprietary software that runs it is custom-designed and use-specific.

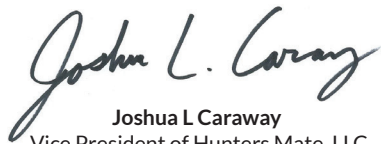
LOWDOWN™ is a dedicated viewer/photo manager made for one thing and one thing only, fast, uncomplicated viewing of your trail cam images and videos. Lowdown makes viewing large numbers of images fast and easy, allows you to finger-zoom in on individual images to see important details, allows you to easily delete individual or groups of selected images and lets you save images to a second (micro SD) card and clear your camera card. All with simple, intuitive touch screen operation!

HUNTERS SERVING HUNTERS

We've been avid trail cam users from the start. As cameras evolved, the SD card made it possible to leave trail cams out for weeks at a time without disturbing hunting areas. This also led to the collection of lots of images to weed through back at home. That's why we developed LOWDOWN™ – the next generation in trail cam viewing – so hunters can view pictures fast, efficiently, and on the go.



Al J Kaiser
President of Hunters Mate, LLC



Joshua L Caraway
Vice President of Hunters Mate, LLC

Welcome to LOWDOWN™

HIGH SPEED TRAIL CAM VIEWER

LET THE EXPERIENCE BEGIN!

It's recommended that you fully charge your viewer before using.

Charge Your Trail Cam Viewer

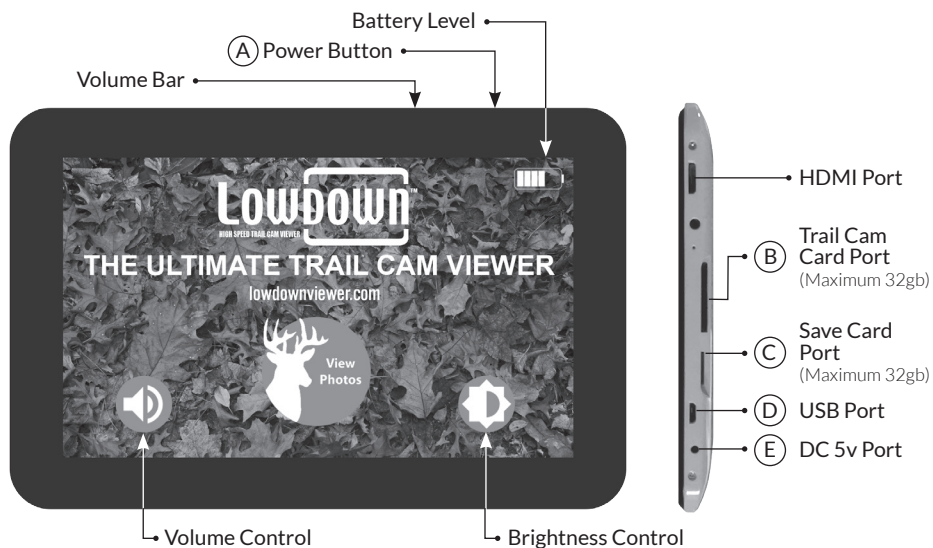
AT HOME

Using the standard 110v adapter for in-home use, plug adapter into the wall and then plug cord into DC 5v Port (E) on the side of the viewer.

IN VEHICLE

Using the 12v car adapter, plug the adapter into the vehicle's 12v plug and then plug the other end into the USB Port (D) on the side of the viewer.

When the viewer is plugged into a charging source, the screen will light up for a few seconds and LOWDOWN will appear in the center of the screen followed by a battery showing the level of charge within the battery. It will then indicate it will complete the charge and the screen will go black, typically a low battery will take 4 hours to charge. A fully charged battery will allow you to view pictures for about 4 hours.



Viewing Your Trail Cam Photos & Videos

Touchscreen operation! With a tap of your finger, you can perform a multitude of functions to view and study your pictures and videos.

Step 1 - INSERT SD CARD

Insert the SD card from your trail camera into the **Trail Cam Card Port (B)** on the side of your viewer until it clicks into place.

Step 2 - TURN ON

Turn the viewer on by pressing and holding the **Power Button (A)** located on the top right hand corner of your viewer for a few seconds. You will see an introductory animation; the home screen appears next.

Step 3 - TAP 'VIEW PHOTOS' ICON

Tap the **View Photos** icon in the center of the home screen. Two folders will appear: the **Trail Cam Card** folder and the **Save Card** folder.

Step 4 - VIEW PHOTOS

LOWDOWN gives you three viewing mode options; Quick View (eight images displayed at once), Full View (one image at a time either 3/4 or Full Screen) and Slide Show.

QUICK VIEW MODE

Tap the **Trail Cam Card** folder and your photos will appear in a double row (eight images). This Quick View mode allows you to view images more quickly. With your finger, swipe across the screen to view additional photos from your Full Sized SD card.

FULL VIEW MODE (3/4 SCREEN OR FULL SCREEN)

Tap a photo to enlarge it to 3/4 Screen. Swipe to view more photos at 3/4 Screen. Tap the photo again to go to Full Screen. Swipe to view more photos at Full Screen.

ZOOM IN (FULL VIEW MODE)

While in Full View mode, touch the screen with your forefinger and thumb and spread apart to zoom in. Use one finger to move your zoomed photo around.

GO FROM FULL SCREEN TO 3/4 SCREEN

When at Full Screen, tap the green **Back Arrow** icon (←) in the upper left-hand corner of the screen to go back to 3/4 Screen format. This format allows you to swipe through the photos more rapidly until you again want to take a closer look.

SLIDE SHOW MODE

A slide show can be viewed (3/4 Screen or Full Screen) by touching the green **Triangle** icon in the upper right hand corner of the screen. To stop the slide show, touch the photo.

Save Photos and Videos on Micro SD Card (not included)

Save photos and videos to a separate MICRO SD CARD when installed in your viewer (LOWDOWN accepts up to 32 GB Micro SD Card – not included).

Step 1 - INSERT MICRO SD

With the viewer shut down in the OFF position, insert your micro SD card into the **Save Card Port** (C) until it locks into place in the side of the viewer. (We recommend a class 10 micro SD card).

Step 2 - INSERT FULL SIZE SD

With the viewer shut down in the OFF position, insert your full sized SD card into **Trail Cam Card Port** (B) until it locks into place in the side of the viewer. (We recommend using class 10 SD cards in your camera's and the LOWDOWN viewer).

Step 3 - TURN ON

Turn the viewer on by pressing and holding the **Power Button** (A) located on the top right hand corner of your viewer for a few seconds. You will see an introductory animation, the home screen appears next.

After the viewer is powered on, you can then switch out to a different Full Size SD card, without powering the viewer back to the OFF position.

STEP 4 - TAP 'SELECT'

With the double row of photos on your screen, tap **Select** in the upper right-hand corner.

Step 5 - SELECT PHOTOS TO SAVE

Tap to select the photos or videos you want to save. They will highlight in green. Then tap the **Save** icon in the upper right corner to save those images to your micro SD card.

Step 6 - TAP OK TO SAVE

A Save Notification will appear in the center of the screen. Tap **OK** to save to the micro SD card, or if you have made a mistake, you can tap **Cancel**, and then tap **Cancel** again to un-highlight the photos.

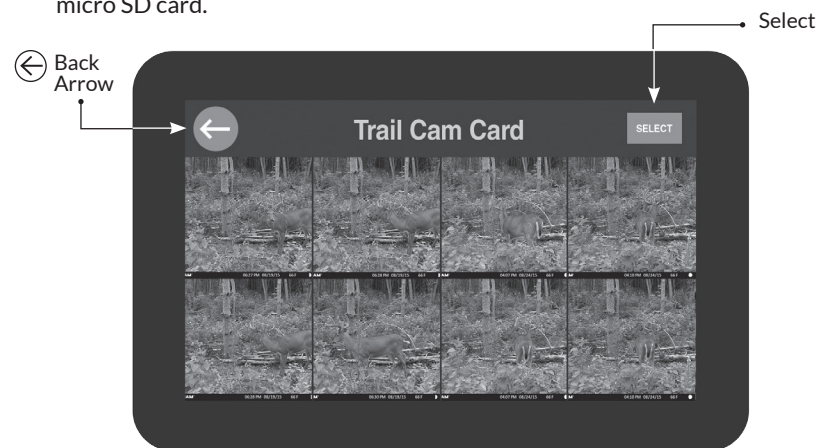
Step 7 - SAVE IMAGES IN OTHER MODES

Save photos to your micro SD card while viewing 3/4 Screen and Full Screen by tapping the **Save** icon in the upper right-hand corner and then selecting **OK** when it appears.

There must be a full size SD card installed in your LOWDOWN Viewer at all times for the viewer to function properly. (Full size SD card, does not have to contain pictures).

Viewing Your Saved Photos and Videos

View saved photos and videos by touching the **Back Arrow** icon (←) in the upper left-hand corner until your two folders appear. Then tap the **Save Card** folder to view all the photos and videos you've saved onto your micro SD card.



When removing your micro SD (save) card, you MUST power your viewer to the OFF position before removing.

Delete Photos and Videos

It's quick and easy to delete unwanted images.

Step 1 - TAP 'SELECT'

With the double row of photos on your screen, tap Select in the upper right-hand corner.

Step 2 - SELECT PHOTOS TO DELETE

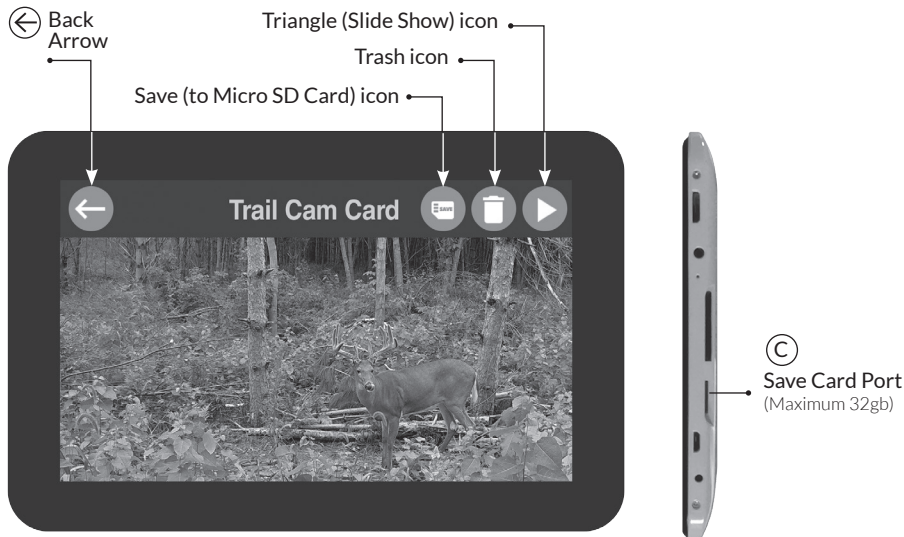
Tap to select the photos or videos you want to delete. They will highlight in green. Then tap the **Trash** icon in the upper right-hand corner of the screen.

Step 3 - TAP 'OK' TO DELETE

A Delete Notification will appear in the center of the screen. Tap **OK** to delete the photos and videos you have selected, or if you have made a mistake, you can tap **Cancel**, and then tap **Cancel** again to un-highlight the photos.

Step 4 - DELETE ON OTHER SCREENS

Delete photos while viewing 3/4 Screen and Full Screen by tapping the **Trash** icon in the upper right-hand corner and then selecting **OK** when it appears.



Delete Entire Folders

Delete folders full of images in just seconds.

We recommend that you check your **Save Card Folder**, to make sure you have saved all the pictures you selected before deleting the entire **Trail Cam Card**.

Step 1 - TAP ARROW ICON

Tap the **Back Arrow** icon in the upper left-hand corner until the two folders appear in the center of the screen.

Step 2 - SELECT FOLDER TO DELETE

You can delete the entire contents of the **Trail Cam Card** folder or the **Save Card** folder by touching and holding your finger on the folder you want to delete until it becomes highlighted in green.

Step 3 - TO DELETE ALL OF THE 'TRAIL CAM CARD' CONTENTS

If you highlighted the **Trail Cam Card** folder, tap the **Trash** icon in the upper right-hand corner of the screen. A Delete Notification will appear in the center of the screen. Tap **OK** to delete the entire contents of the **Trail Cam Card** folder. Your SD card is now ready to be inserted into your trail camera.

TO DELETE ALL OF THE SAVED FILES IN THE 'SAVE CARD' FOLDER

If you highlighted the **Save Card** folder, tap the **Trash** icon in the upper right-hand corner of the screen. A Delete Notification will appear in the center of the screen. Tap **OK** to delete all of the saved images in the **Save Card** folder, or if you have made a mistake, tap **Cancel**, then tap **Cancel** again to un-highlight the folder.

View Images For All To See On Your TV

Your viewer can also be connected with an HDMI cable to your flat screen TV to view your photos and videos with family and friends.

HDMI CABLE IS NOT INCLUDED WITH YOUR VIEWER. HDMI CABLE CAN BE PURCHASED WHEREVER LOWDOWN IS SOLD OR ON LOWDOWNVIEWER.COM

Conserve Battery Power

'STANDBY' AND 'SLEEP' MODES SAVE BATTERY POWER

Your viewer can be set in Standby mode for short periods of time when it is not in use by pressing the **Power Button** (A). The viewer will also go into **Sleep** mode after fifteen minutes of inactivity. To reactivate the viewer, just press the **Power Button**.

'POWER OFF' TO EXTEND BATTERY LIFE

To turn your viewer off, press and hold the **Power Button**. A prompt will appear. Selecting **Power Off** will turn off your viewer and prevent further battery drain.



HIGH SPEED TRAIL CAM VIEWER

One Year Limited Warranty

Your LOWDOWN viewer is covered by a one (1) year Limited Warranty on material and workmanship from date of original purchase. Purchase must have been made through LOWDOWN website or an Authorized Dealer for LOWDOWN. This warranty covers defects in workmanship and materials. This warranty does not apply for units damaged due to intentional or accidental abuse. A purchase from individual, unauthorized dealers, or unauthorized Internet sites void this warranty. THIS WARRANTY DOES NOT APPLY TO CORROSION, CRACKS, OXIDATION, WATER DAMAGE, OR BATTERY LONGEVITY.

THANK YOU

For Purchasing LOWDOWN!

We know you'll enjoy your LOWDOWN high-speed viewer and hope you tell your hunting friends about it. If you have any issues with the LOWDOWN viewer, let us know. Also, if you love using your viewer, send us a short testimonial about your experience. We'd like to share it on our website. Please email us at: information@lowdownviewer.com

Return authorization must be obtained via email to:
information@lowdownviewer.com

PATENT PENDING